

## The Royal Marsden NHS Foundation Trust

RM Partners A17

The Royal Marsden NHS Foundation Trust incorporates The Royal Marsden Hospital in London <https://www.royalmarsden.nhs.uk/> <<https://www.royalmarsden.nhs.uk/>>

## Patient inclusion and data sources

The majority of these results are for patients in England and Wales diagnosed with bowel cancer 1 Apr 2017 – 31 Mar 2018. The exceptions are for adjuvant chemotherapy and the four trust outcomes: 30-day unplanned readmission, 90-day mortality, 2-year mortality and 18-month stoma rate. 30-day unplanned readmission and 90-day mortality are further restricted to patients undergoing surgery up to 31 October 2018 for patients treated in England, and up to 28 February 2018 for patients treated in Wales. Two-year mortality estimates include patients undergoing a major resection between 1 April 2015 and 31 March 2016. 18-month stoma rates include rectal cancer patients undergoing a major resection between 1 April 2014 and 31 March 2017. Adjuvant chemotherapy estimates include patients undergoing major resection for pathological stage III colon cancer between 01 June 2014 and 31 August 2017 in England only.

The Audit dataset is linked to Hospital Episode Statistics (HES) and Patient Episode Database for Wales (PEDW) at the patient level to obtain further information on patient care and follow-up such as stoma reversal and emergency readmissions in England/Wales. The dataset also links to Office of National Statistics records. These provide information about date, place and cause of death.

NBOCA also links to the National Radiotherapy Dataset (RTDS) for information on radiotherapy treatment in England, and the Systemic Anti-Cancer Therapy database (SACT) for information on chemotherapy treatment in England.

## Data Quality

### Case ascertainment

Number of patients reported to the Audit as a percentage of the number of patients admitted for the first time to the trust/network with a diagnosis of bowel cancer within the audit period according to HES. This can be larger than 100 if more patients are reported to the Audit than identified in HES.

### Data completeness

% of relevant patient group with useable value of data item.

### ASA grade

% of patients recorded as having a major resection who have a particular ASA grade recorded, or no ASA recorded.

## Management of all patients

### Potentially curative patients

Patients electively diagnosed with colon cancer with pre-treatment staging of T2-T4 and no evidence of metastatic disease.

## Management of patients having major resection

### At least 12 lymph nodes excised (%)

% of colon cancer patients undergoing major resection with a recorded number of lymph nodes, who had at least 12 lymph nodes examined.

### Adjuvant chemotherapy

% of adjuvant chemotherapy in patients undergoing major resection for pathological stage III colon cancer between 01 June 2014 and 31 August 2017 in England only. These are unadjusted chemotherapy rates.

## Rectal cancer patients

### Neo-adjuvant therapy (%)

% of rectal cancer patients having short- or long-course radiotherapy prior to major resection.

### Circumferential resection margin: Negative (%)

% of rectal cancer patients undergoing major resection whose CRM is reported to be negative.

### Circumferential resection margin: Recorded (%)

% of rectal cancer patients undergoing a major resection who have a recorded CRM.

### APER rate (%)

% of patients with rectal cancer undergoing abdominoperineal excision of the rectum and therefore having a permanent stoma.

## Compare trust outcomes

Funnel plots display trust risk-adjusted outcomes for 90-day mortality, 30-day unplanned readmission, 2-year mortality and, for rectal cancer patients, 18-month stoma rate. The funnel regions represent the 95 per cent limit and the 99.8 per cent limit for trusts compared to the national average. Those trusts with results outside the outer (99.8 per cent) limit are considered potential outliers.

Risk adjustment is performed using the seven items listed under Data Quality as well as mode of admission (elective/emergency) and number of co-morbidities according to HES/PEDW, and an interaction between age and distant metastases. Missing values are imputed using Multiple Imputation. The model for two-year mortality additionally includes interactions between follow-up time (0-3 months after surgery vs. 3-24 months after surgery) and all of the risk factors.

A stoma is considered to be reversed if a HES/PEDW record with relevant code is identified within 18 months of the initial surgical procedure.

See [FAQs <https://www.nboca.org.uk/about/faq/>](https://www.nboca.org.uk/about/faq/) for more details.

## Data Quality

All Patients:	Trust	Network	National
Number of patients in Audit	N/A	1339	31676
Case ascertainment (%)	N/A	64	95
Data completeness of:			

<b>All Patients:</b>	<b>Trust</b>	<b>Network</b>	<b>National</b>
– Pre-treatment TNM (%)	N/A	80	80
– Performance status (%)	N/A	85	86

<b>Patients having major resection:</b>	<b>Trust</b>	<b>Network</b>	<b>National</b>
Number of patients in Audit	43	888	19218
ASA grade 1 (%)	N/A	15	11
ASA grade 2 (%)	63	51	53
ASA grade 3 (%)	33	29	28
ASA grade 4+ (%)	N/A	2	3
ASA grade not recorded (%)	5	3	5
Data completeness of:			
7 Audit items for risk-adjustment (%)	95	84	86

### Key:

- > 80%
- 50 - 80%
- < 50%

## Management of all patients

---

<b>All Patients:</b>	<b>Trust</b>	<b>Network</b>	<b>National</b>
Number of patients in Audit	N/A	1339	31676
Seen by Clinical Nurse Specialist (%)	N/A	83	87

<b>All patients deemed potentially curative</b>	<b>Trust</b>	<b>Network</b>	<b>National</b>
Number of potentially curative patients	N/A	344	7416
Undergoing major resection (%)	N/A	91	86

## Management of patients having major resection

---

<b>Patients having major resection:</b>	<b>Trust</b>	<b>Network</b>	<b>National</b>
Number of patients in Audit	43	888	19218
Distant metastases (%)	14	7	8
Urgent or emergency surgery (%)	7	11	15
At least 12 lymph nodes excised (%)	100	88	84
Laparoscopic surgery attempted (%)	37	70	69
Risk-adjusted length of stay > 5 days (%)	93	72	62

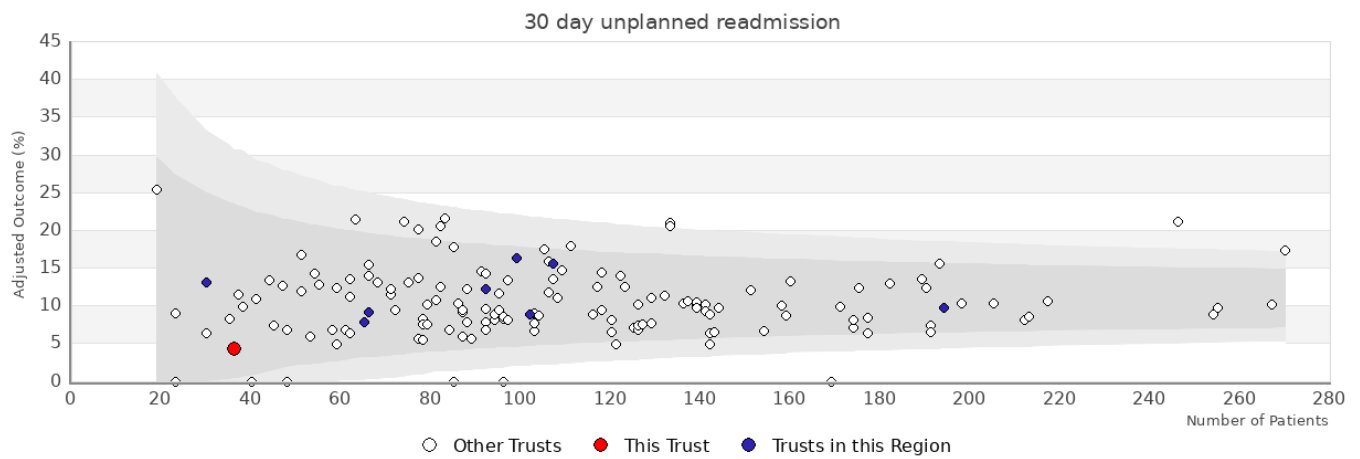
<b>Patients having major resection for stage III colon cancer:</b>	<b>Trust</b>	<b>Network</b>	<b>National</b>
Number of patients in audit	11	536	11837
Adjuvant chemotherapy (%)	82	65	62

## Rectal cancer patients

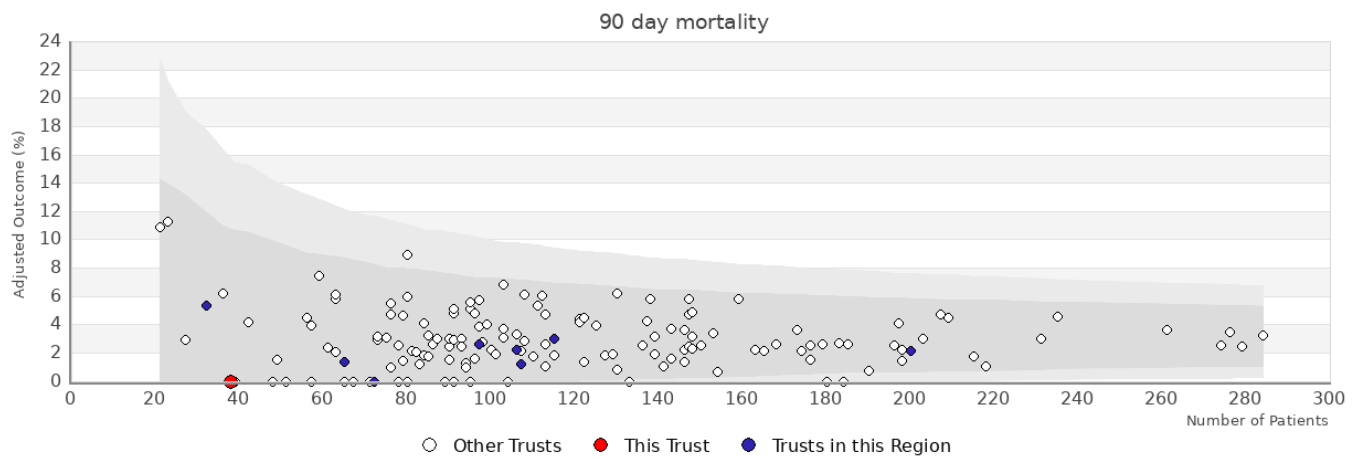
---

<b>Patients having major resection:</b>	<b>Trust</b>	<b>Network</b>	<b>National</b>
Number of patients in Audit	21	212	4588
Neoadjuvant therapy (%)	53	33	33
Circumferential resection margin: Recorded (%)	100	86	90
Circumferential resection margin: Negative (%)	86	82	80
Rectal volume	N/A	N/A	N/A

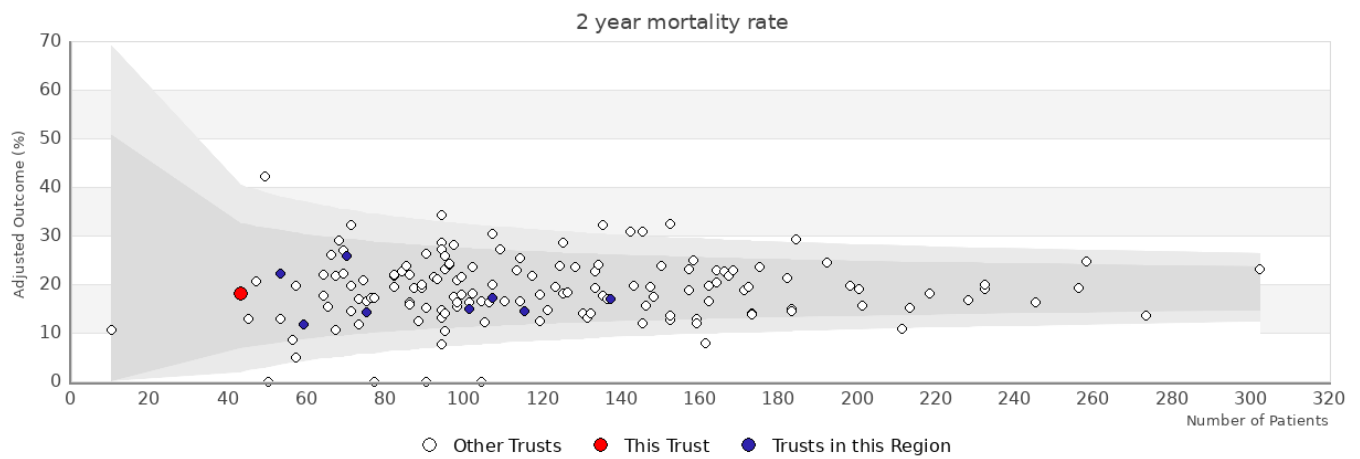
<b>Patients in APER/Hartmanns estimate:</b>	<b>Trust</b>	<b>Network</b>	<b>National</b>
Number of patients in APER/Hartmanns estimate	N/A	N/A	N/A
APER/Hartmanns (%)	N/A	N/A	N/A



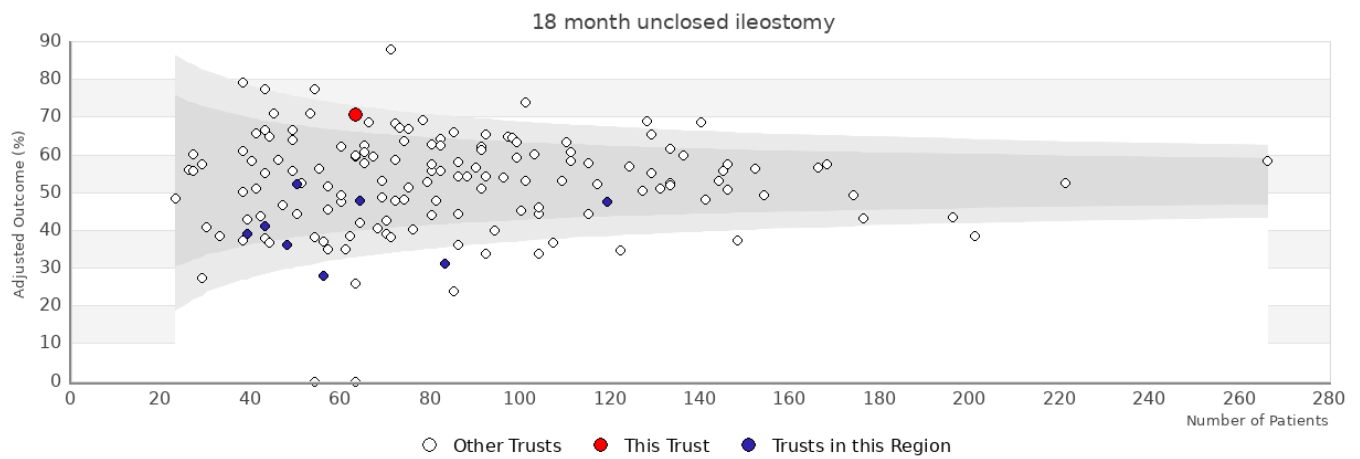
Trust	Number	Adjusted	Observed
The Royal Marsden NHS Foundation Trust	36	4.4%	5.6%
Other trusts within the region: RM Partners			
Chelsea and Westminster Hospital NHS Foundation Trust	102	8.8%	8.8%
Croydon Health Services NHS Trust	66	9.1%	9.1%
Epsom and St Helier University Hospitals NHS Trust	107	15.6%	15.9%
Imperial College Healthcare NHS Trust	99	16.3%	16.2%
Kingston Hospital NHS Foundation Trust	92	12.2%	10.9%
London North West Hospitals NHS Trust	194	9.8%	10.3%
St George's Healthcare NHS Trust	30	13.1%	13.3%
The Hillingdon Hospitals NHS Foundation Trust	65	7.8%	7.7%



Trust	Number	Adjusted	Observed
The Royal Marsden NHS Foundation Trust	38	-	-
Other trusts within the region: RM Partners			
Chelsea and Westminster Hospital NHS Foundation Trust	106	2.2%	1.9%
Epsom and St Helier University Hospitals NHS Trust	115	3%	3.5%
Imperial College Healthcare NHS Trust	107	1.2%	0.9%
Kingston Hospital NHS Foundation Trust	97	2.6%	2.1%
London North West Hospitals NHS Trust	200	2.1%	2%
St George's Healthcare NHS Trust	32	5.4%	3.1%
The Hillingdon Hospitals NHS Foundation Trust	65	1.4%	1.5%



Trust	Number	Adjusted	Observed
The Royal Marsden NHS Foundation Trust	43	18.1%	12.4%
Other trusts within the region: RM Partners			
Chelsea and Westminster Hospital NHS Foundation Trust	107	17.2%	19.7%
Croydon Health Services NHS Trust	53	22.3%	20.8%
Epsom and St Helier University Hospitals NHS Trust	70	25.8%	21.3%
Imperial College Healthcare NHS Trust	115	14.5%	14.4%
Kingston Hospital NHS Foundation Trust	101	15%	17.6%
London North West Hospitals NHS Trust	137	17.1%	13.3%
St George's Healthcare NHS Trust	75	14.2%	16%
The Hillingdon Hospitals NHS Foundation Trust	59	11.6%	12.6%



Trust	Number	Adjusted	Observed
The Royal Marsden NHS Foundation Trust	63	70.7%	71.4%
Other trusts within the region: RM Partners			
Chelsea and Westminster Hospital NHS Foundation Trust	64	47.8%	48.4%
Croydon Health Services NHS Trust	43	41.1%	41.9%
Epsom and St Helier University Hospitals NHS Trust	39	39%	41%
Imperial College Healthcare NHS Trust	83	31.2%	31.3%
Kingston Hospital NHS Foundation Trust	48	36.2%	35.4%
London North West Hospitals NHS Trust	119	47.7%	45.4%
St George's Healthcare NHS Trust	56	28%	26.8%
The Hillingdon Hospitals NHS Foundation Trust	50	52.1%	54%