

Newsletter July 2025

Close it Quick Ileostomy Closure QI Collaborative

[READ MORE](#)


Do you want to reduce delays and improve outcomes for patients requiring ileostomy closure in your hospital?

1. Dashboard with local and national data for insights and benchmarking
2. Specialist coaching and support with a QI consultant dedicated to your site
3. Collaborate with peers at other sites, as well as RCS and its pedigree of successful QI projects
4. Join webinars and events
5. Improve ileostomy care, ease system pressure, and cut costs



Learn more in our informative webinar

[WATCH](#)


#ClosItQuick

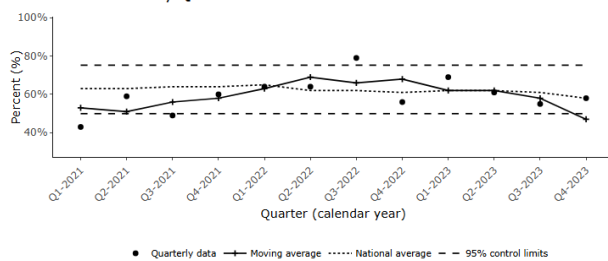
Quarterly Data Dashboards – last updated 10 July 2025

[VIEW LATEST DASHBOARD](#)

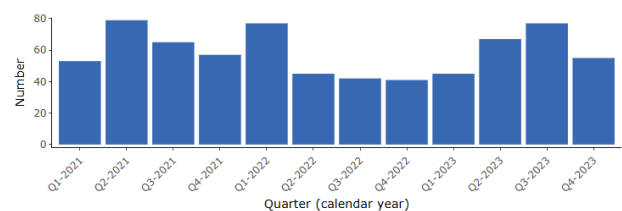

Get the most recent information on data completeness and select performance indicators at the levels of NHS Trust and Cancer Alliance in England throughout the year.

National Bowel Cancer Audit - Quarterly report (Cancer alliance level)
People with stage 3 colon cancer receiving adjuvant chemotherapy (unadjusted) at ABC Cancer Alliance

Performance by Quarter



Case Volume



NBOCA State of the Nation Reflections

Webinar Series, January 2025
Watch now if you missed out



A Nurse's Perspective
What can nurses learn from the latest findings?

Gabrielle Thorpe, Professor of Professional Development in Health Sciences, University of East Anglia offers a compelling nursing perspective on the latest NBOCA findings, showing how specialist colorectal nurses can use NBOCA findings not just for benchmarking, but as a springboard for innovation and quality improvement.

[READ IT HERE](#)
